



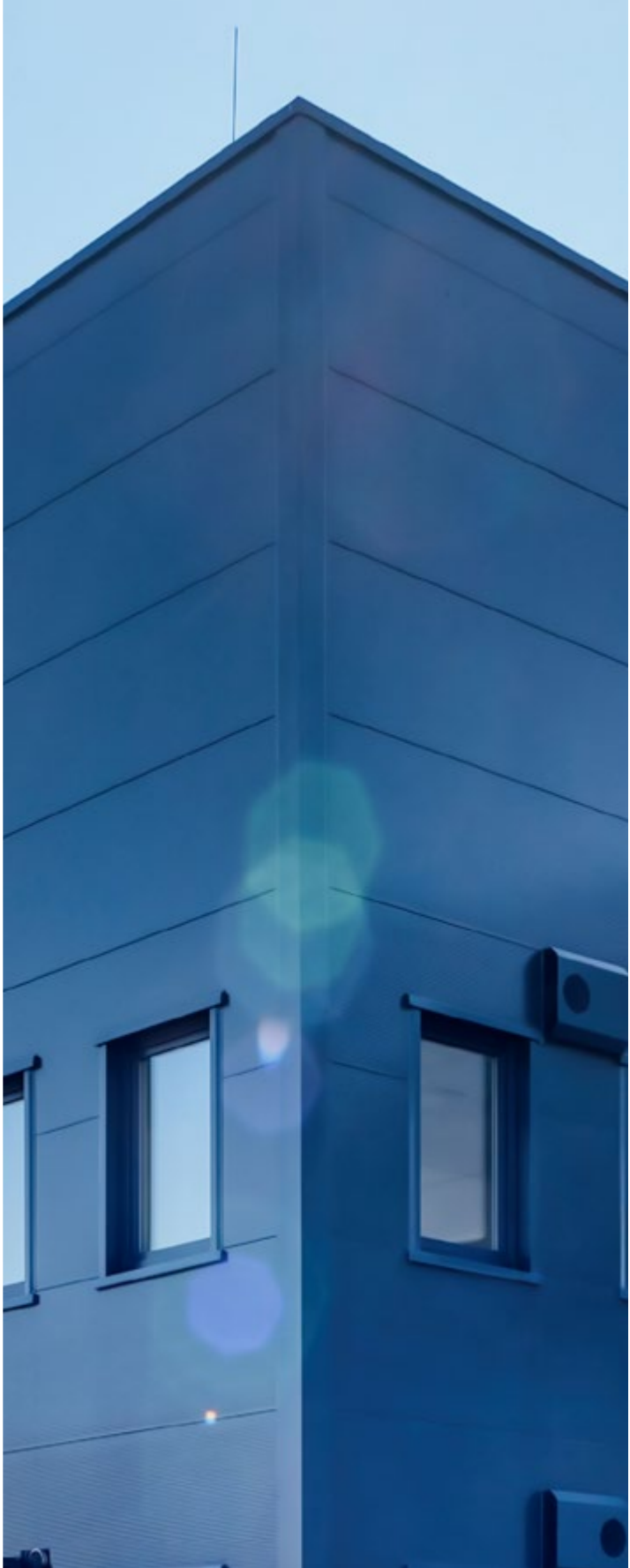
STAVEBNÍ FIRMA PLUS s. r. o. © 2024, www.firmaplus.cz



NEW PRODUCTION HALL CONSTRUCTION

FORTACO





NEW PRODUCTION HALL FORTACO IN HOLÍČ

The project included not only the construction of a new hall but also the refurbishment of the existing premises – specifically, the reconstruction of paved surfaces and the development of utility networks including exterior lighting.

The modern hall, with an area of 3 860 m² and a height of 12.57 meters, was designed for the relocation of existing production technology. The administrative section (315 m²) includes offices, meeting rooms, and sanitary facilities. Thanks to a well-thought-out technical solution, the energy demand was reduced, working conditions improved, and noise levels decreased. A total of 5 475 m² of surrounding paved areas were reconstructed. The construction received recognition in the category “Projects Outside the South Moravian Region” within the Building of the Year 2024 competition for the South Moravian Region. The project boosted efficiency and reinforced Fortaco’s modern industrial image.

PARAMETRY STAVBY

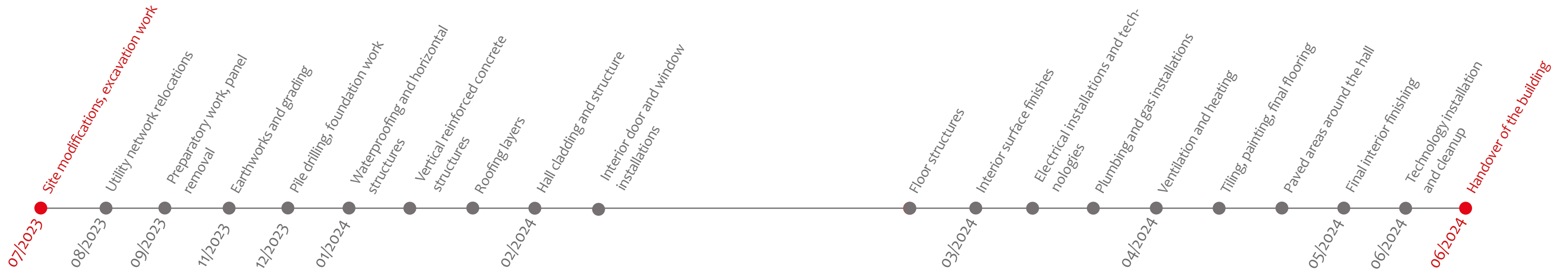
Construction period: 07/2023 - 06/2024
Built-up area of the hall: 3 435 m²
Paved areas: 5 475 m²
Total built volume: approx. 38 200 m³

SINCERE THANKS TO THE ENTIRE IMPLEMENTATION TEAM
FOR THE HIGH-QUALITY WORK.

WE ALSO THANK FORTACO FOR THEIR TRUST AND THE
OPPORTUNITY TO REALIZE THIS IMPORTANT CONTRACT.

Ing. Tomáš POTRUSIL
Executive Director of SFP

Jan POLACH
Chief Site Manager



View of the Future Construction Site

A new production hall was built on this site in just 11 months.





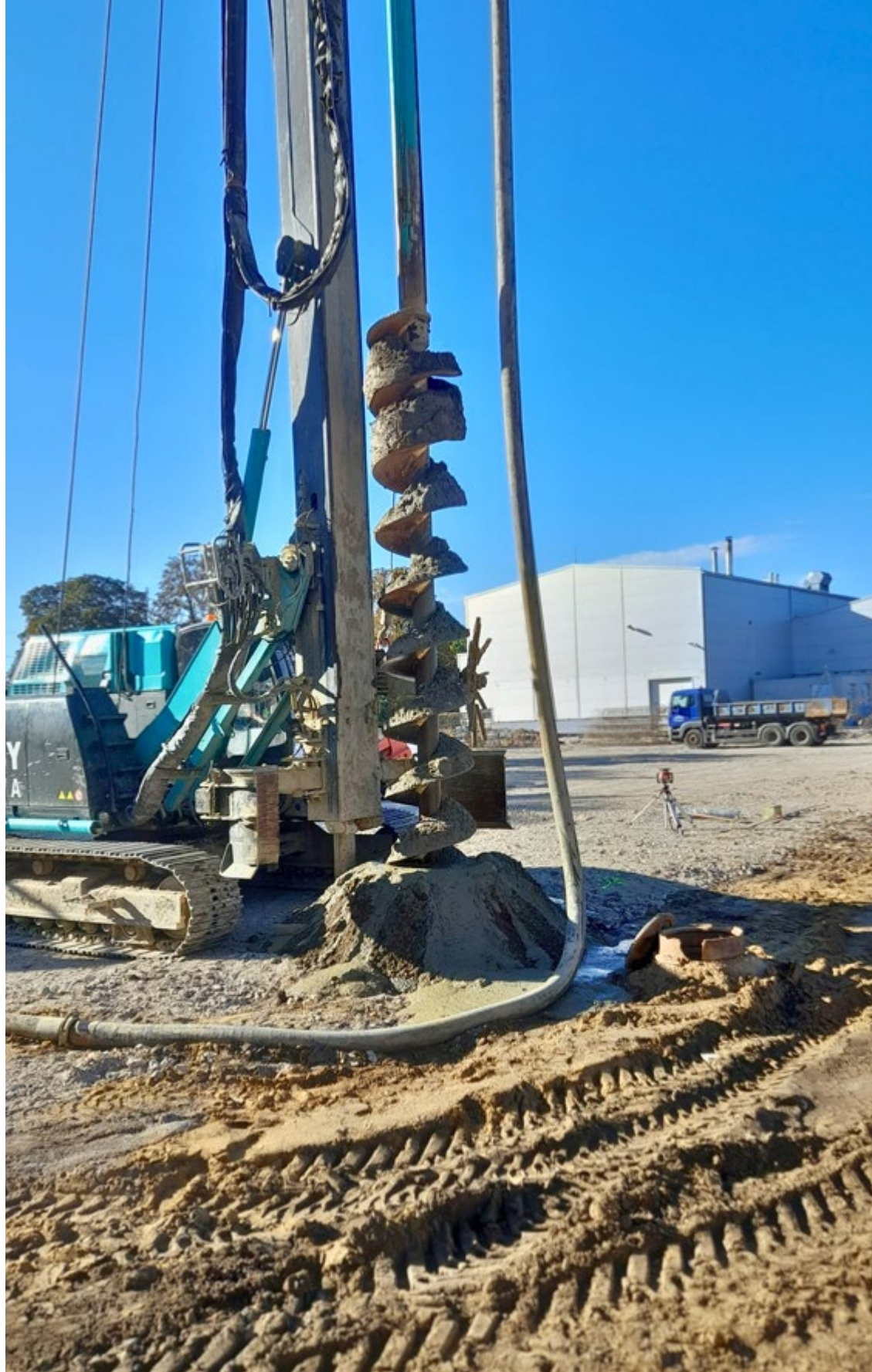
Removal of Original Road Panels

Before construction could begin, the old concrete panels had to be removed. This cleared the area for grading and the subsequent foundation of the new production hall.

Grading and Subsoil Stabilization

The construction site was graded, and the subsoil was reinforced with a special cement mixture. This created a solid and stable base, allowing the safe commencement of the new production hall's foundations.





Drilling of Piles for Foundation

The hall's load-bearing structure is based on deep foundation piles that ensure the building's stability. Reinforcement was placed into the drilled holes and secured with concrete. This created a strong foundation for assembling the structural elements.

Concreting of Foundation Footings and Welding of Reinforcement Cages

Before the concreting process, reinforcement cages were prepared and welded directly on site. These ensure that the hall's foundations are strong and stable. The finished cages were placed into the drilled holes in the ground and then filled with concrete, creating a solid and reliable base for the entire load-bearing structure of the hall.





Installation of Prefabricated Columns of the Load-Bearing Structure

The backbone of the hall's structural frame consists of reinforced concrete columns. Using a crane, they were precisely placed onto the prepared pile caps and securely anchored. This created a stable base for the subsequent assembly work.

Installation of the Roof Structure

The load-bearing parts of the roof were assembled using a crane and work platforms. Large beams forming the base of the entire roof structure were gradually placed onto the prepared concrete columns. All components had to be positioned with high precision to ensure proper alignment with the roof panels and skylights, which later bring natural light into the hall.





Construction of the Administrative Section
The two-story administrative section was built using a similar method as the rest of the hall. The photo shows the installation of the load-bearing structure, ceiling panels, and concrete staircase. Today, this area serves as staff facilities – it includes offices, meeting rooms, and sanitary amenities.

Completion of the Structural Frame and Paved Areas

A drone view captures a key phase of the construction – the assembly of the hall's concrete load-bearing structure. The main frame is now complete, forming a solid base for cladding and technology installation. At the same time, landscaping and preparation of the base layers for future paved areas are underway around the hall.





Installation of Cladding and Roofing

Prefabricated sandwich PIR panels were used for the hall's cladding, providing both structural enclosure and thermal insulation. At the same time, the roof was assembled, consisting of load-bearing trapezoidal sheets, an insulation layer, and a waterproof PVC membrane that protects the building from moisture and weather conditions.

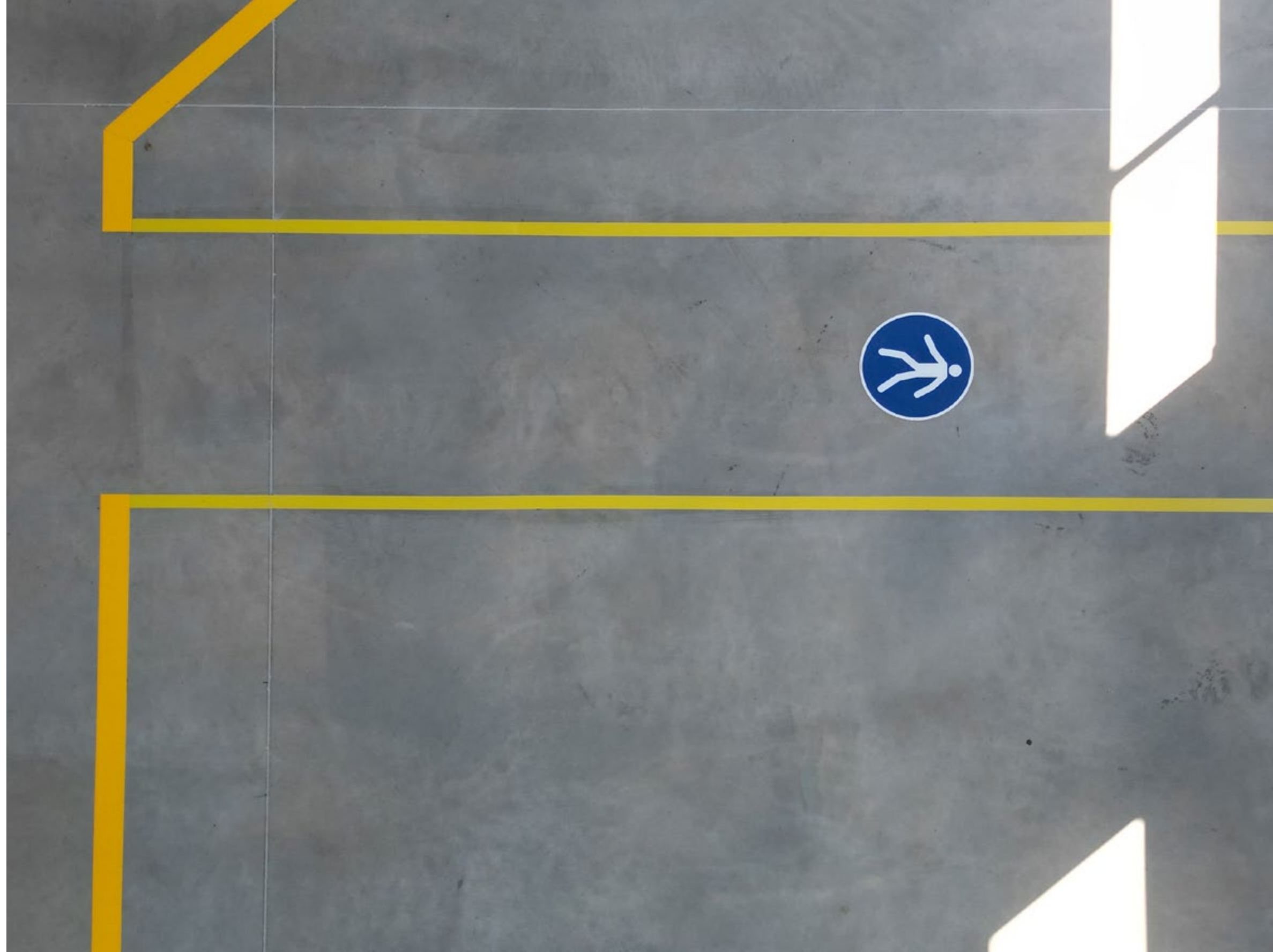
The hall is designed as a modern production facility that combines efficient logistics with state-of-the-art technological equipment. With a built-up area of approximately 3,000 m², it offers ample space for the smooth flow of assembly and manufacturing processes.

The hall is equipped with gas infrared heaters, an air handling system ensuring optimal indoor climate, and lighting that meets industrial standards. The structure allows for flexible layout of production and storage areas according to operational needs.

The floor is made of steel fiber-reinforced concrete screed, which provides high resistance to loads and mechanical wear. The hall is adapted for the seamless movement of machinery and personnel, meeting the demanding requirements of modern production operations.









The completed production hall is ready for operation. This modern facility meets the highest industrial standards and offers efficiently designed spaces for assembly, logistics, and administrative support.

During construction, emphasis was placed on high-quality cladding, energy efficiency, and advanced technological equipment – all contributing to reduced operating costs. The adjacent paved areas ensure convenient access for logistics and material handling.



FORTACO

General Contractor:
STAVEBNÍ FIRMA PLUS s.r.o.
Měšťanská 3992/109
695 01 Hodonín
IČ 26285363

Project Investor:
FORTACO s.r.o.
Staničná 788/11
908 51 Holíč, SR
IČ 36181480

Award:
The project won an award in the 2024
Building of the Year competition for
the South Moravian Region (category:
projects outside JMK).

STAVEBNÍ FIRMA PLUS has been a reliable partner and general contractor since 1990. The company has completed thousands of projects in both civil and industrial construction.

It also offers a Full Service – a comprehensive solution from project evaluation and design, through construction and final inspection, to warranty and post-warranty service.

Fortaco Holíč is a key manufacturer of assembly units and cabins for the heavy machinery industry. The company focuses on efficient production, modern technological solutions, and high quality.

As part of the Fortaco Group, which operates across Europe and Asia, it offers top-tier manufacturing capacity and expert know-how. Through automation and precision welding, Fortaco contributes to optimized production processes and innovation in the field.

Designer: Marek Bilíček DiS., STAVEBNÍ FIRMA PLUS s.r.o.
Chief Site Manager: Jan Polach
Site Supervisors: Ing. Martin Eisner, Lukáš Moravčík
Construction Supervision: Ing. Jaroslav Fojtách

Fotografie v knize byly použity z archivu STAVEBNÍ FIRMY PLUS s.r.o.

